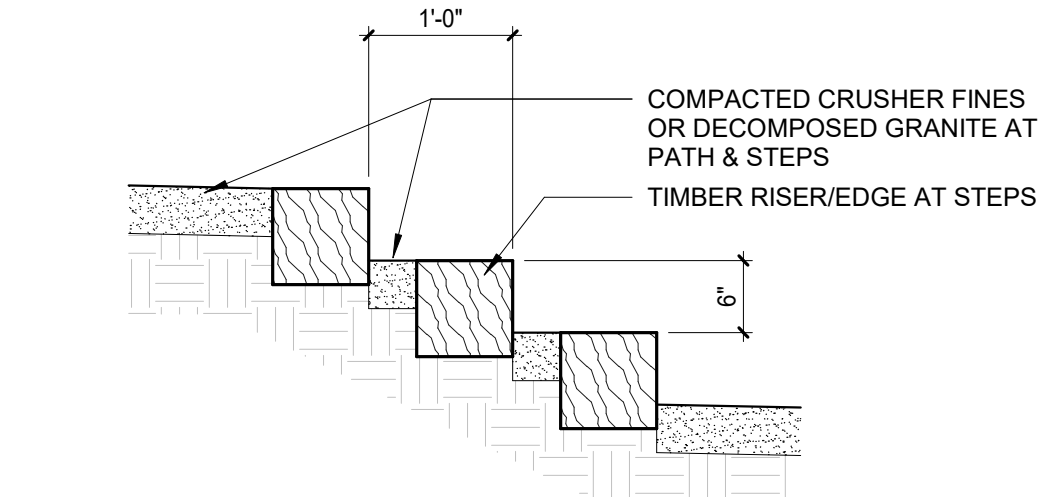
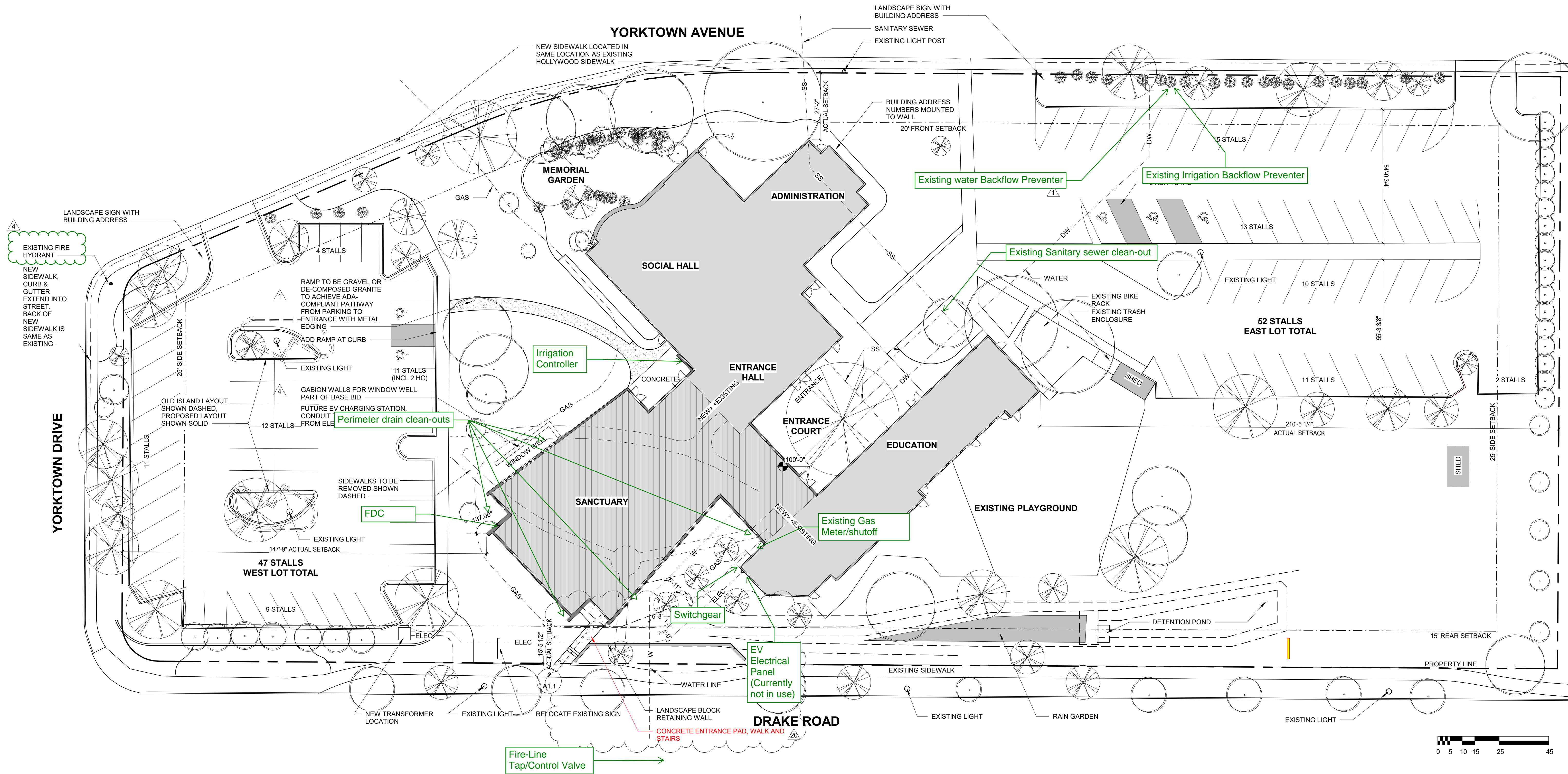


5/1/2023 10:52:06 AM
Autodesk Docs://1700-Foothills Unitarian/1700-CD5.v4
COPYRIGHT 2021 EVERS ARCHITECTURE PC

1 SITE PLAN

1" = 20'-0"



2 SITE STEP DETAIL

3/4" = 1'-0"

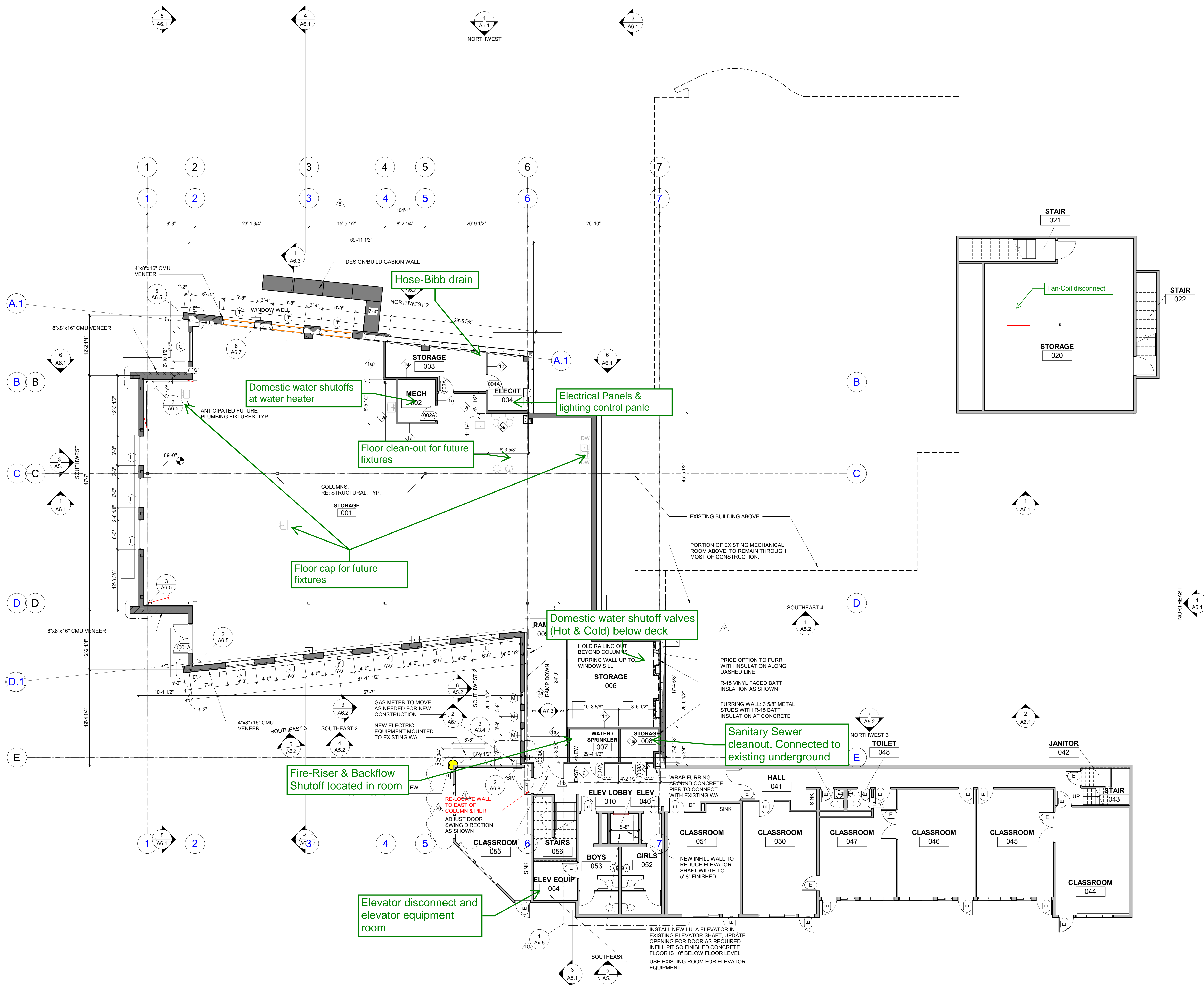
mechanical - electrical engineer
OWEN & ASSOCIATES, INC.
structural engineer
KL&A, INC.
landscape architect
SARNETT ASSOCIATES
civil engineer
BASELINE ENGINEERING

SITE PLAN

SCALE
PROJECT NUMBER
DRAWN BY
CHECKED BY
DATE
REVISIONS

As indicated
1700
AEO
PJE
12.13.22

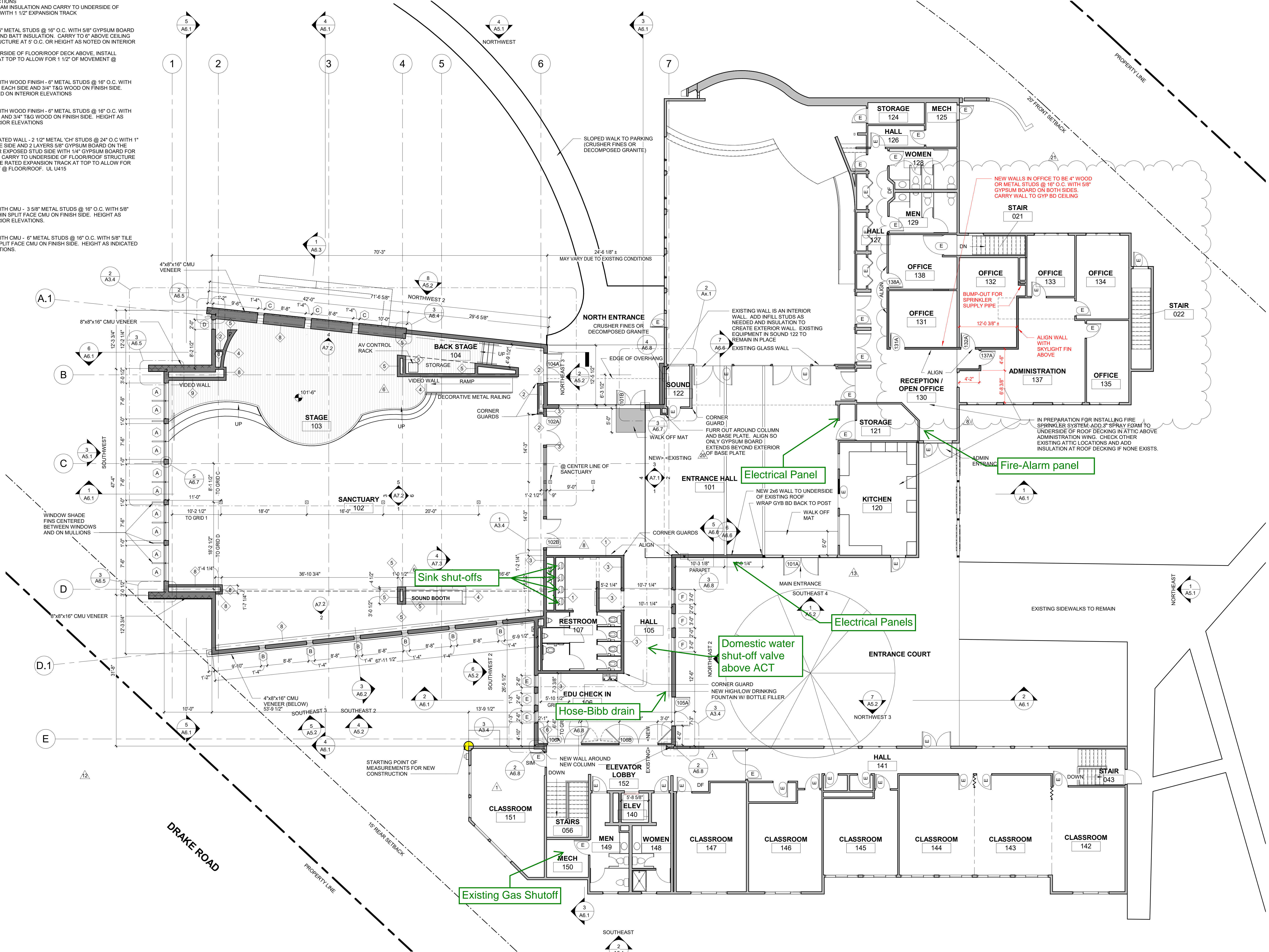
20 RFI 72, 74 & 75 04.27.23
1 PERMIT COMMENTS 04.06.22
4 ADD 02 05.15.22



1 LOWER FLOOR PLAN
1/8" = 1'-0"

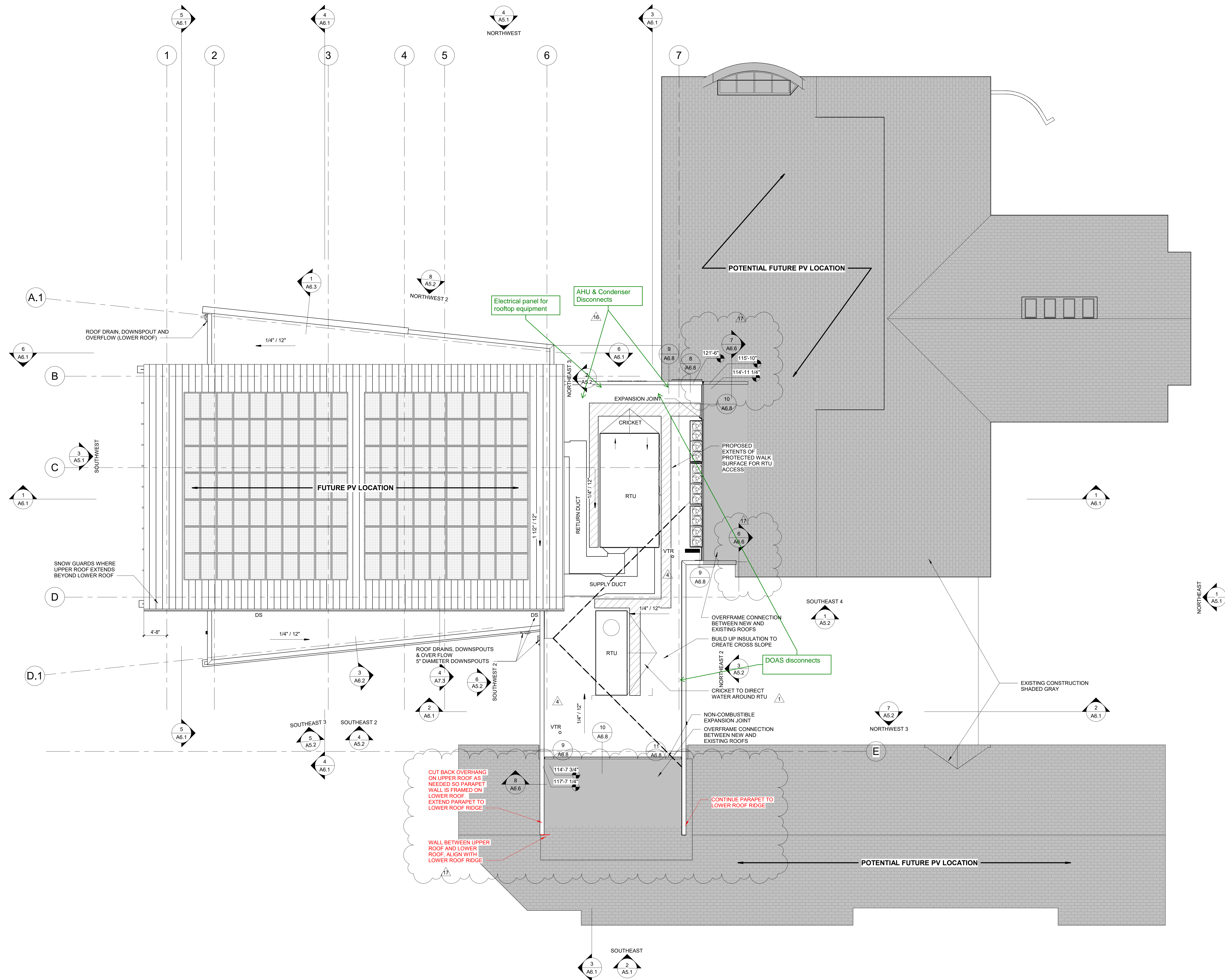
INTERIOR WALL LEGEND

- 1 INTERIOR 4" WALL - 3 5/8" METAL STUDS @ 16" O.C. WITH 5/8" GYPSUM BOARD EACH SIDE AND SOUND BATT INSULATION. CARRY TO 6" ABOVE CEILING AND BRACE TO STRUCTURE AT 5' O.C. OR HEIGHT AS NOTED ON INTERIOR ELEVATIONS
1a: CARRY TO UNDERSIDE OF FLOOR/ROOF DECK ABOVE, INSTALL EXPANSION TRACK AT TOP TO ALLOW FOR 1 1/2" OF MOVEMENT @ FLOOR/ROOF.
- 2 INTERIOR 4" FURRING WALL - 3 5/8" METAL STUDS @ 16" O.C. WITH 5/8" GYPSUM BOARD ON EXPOSED SIDE. HEIGHT AS NOTED ON INTERIOR ELEVATIONS OR SECTIONS
2a: ADD 2" SPRAY FOAM INSULATION AND CARRY TO UNDERSIDE OF STRUCTURE ABOVE WITH 1 1/2" EXPANSION TRACK
- 3 INTERIOR 6" WALL - 6" METAL STUDS @ 16" O.C. WITH 5/8" GYPSUM BOARD EACH SIDE AND SOUND BATT INSULATION. CARRY TO 6" ABOVE CEILING AND BRACE TO STRUCTURE AT 5' O.C. OR HEIGHT AS NOTED ON INTERIOR ELEVATIONS
3a: CARRY TO UNDERSIDE OF FLOOR/ROOF DECK ABOVE, INSTALL EXPANSION TRACK AT TOP TO ALLOW FOR 1 1/2" OF MOVEMENT @ FLOOR/ROOF.
- 4 INTERIOR 6" WALL WITH WOOD FINISH - 6" METAL STUDS @ 16" O.C. WITH 5/8" GYPSUM BOARD EACH SIDE AND 3/4" T&G WOOD ON FINISH SIDE. HEIGHT AS INDICATED ON INTERIOR ELEVATIONS
- 5 INTERIOR 6" WALL WITH WOOD FINISH - 6" METAL STUDS @ 16" O.C. WITH 5/8" GYPSUM BOARD AND 3/4" T&G WOOD ON FINISH SIDE. HEIGHT AS INDICATED ON INTERIOR ELEVATIONS
- 6 INTERIOR 2-HOUR RATED WALL - 2 1/2" METAL "CM" STUDS @ 24" O.C. WITH 1" SHAFT LINER ON ONE SIDE AND 2 LAYERS 5/8" GYPSUM BOARD ON THE OTHER SIDE. COVER EXPOSED STUD SIDE WITH 1/4" GYPSUM BOARD FOR FINISHED SURFACE. CARRY TO UNDERSIDE OF FLOOR/ROOF STRUCTURE ABOVE. INSTALL FIRE RATED EXPANSION TRACK AT TOP TO ALLOW FOR 1 1/2" OF MOVEMENT @ FLOOR/ROOF. UL U415
- 7 NOT USED
- 8 INTERIOR 4" WALL WITH CMU - 3 5/8" METAL STUDS @ 16" O.C. WITH 5/8" TILE BACKER AND THIN SPLIT FACE CMU ON FINISH SIDE. HEIGHT AS INDICATED ON INTERIOR ELEVATIONS.
- 9 INTERIOR 6" WALL WITH CMU - 6" METAL STUDS @ 16" O.C. WITH 5/8" TILE BACKER AND THIN SPLIT FACE CMU ON FINISH SIDE. HEIGHT AS INDICATED ON INTERIOR ELEVATIONS.



1 MAIN FLOOR PLAN
1/8" = 1'-0"

3/1/2023 9:27:15 AM
Autodesk Docs://1700-Foothills Unitarian/1700-CD5.v4
COPYRIGHT 2021 EVERS ARCHITECTURE PC



1

ROOF PLAN

1/8" = 1'-0"



ROOF PLAN

SCALE 1/8" = 1'-0"
PROJECT NUMBER 1700
DRAWN BY AEO
CHECKED BY PJE
DATE 12.13.22
REVISIONS

17	RFI 63	03.01.23
16	AS 016	02.21.23
1	PERMIT COMMENTS	04.06.22
4	AS 002	05.10.22

A3.3
FINAL DEVELOPMENT PLAN

mechanical - electrical engineer
OVEN & ASSOCIATES, INC.
structural engineer
KL&A, INC.
landscape architect
SARINEN ASSOCIATES
civil engineer
BASELINE ENGINEERING

Foothills Unitarian
1815 YORKTOWN AVENUE FORT COLLINS COLORADO

ewers ARCHITECTURE
1420 WASHINGTON AVENUE GOLDEN COLORADO 80401
303.871.0977 • EVERSARCHITECTURE.COM